

## SLIDE OVERVIEW – THE LITURGICAL YEAR TE TAU ONA RITENGA TAPU

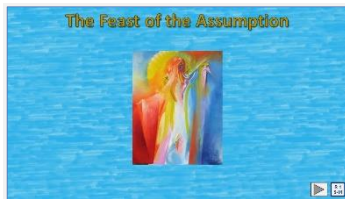
### The Feast of the ASSUMPTION

#### Year 6 Resource 01

Print off this slide overview to supplement your planning.

Refer to Teacher's Notes for background information related to the resource content and suggested Teaching and Learning Experiences in the Teacher's book or in the Teacher's material under Resource Notes on the Resource Home Page.

If worksheets are used in this resource these can be printed from PDF files that are available on-line in the (Lesson) Resource Documents.



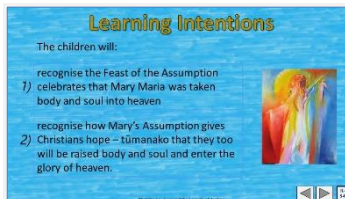
#### Slide 1 The Feast of the Assumption

Use this slide as a focussing strategy to introduce the resource topic.

Read the title together and invite children to share something they know about the feast of Mary's Assumption.

Tell the story of Mary's Assumption and sing Mary songs in class prayer this week to honour Mary.

#### Teacher's Notes



#### Slide 2 Learning Intentions

Read through the Learning Intentions with the class and identify some ideas/questions that might be explored in the resource.

#### Teacher's Notes



#### Slide 3a What do I know about the life of Mary, Mother of Jesus?

Note the woman in the image with Mary as a little girl is her mother St Ann, who was Jesus' grandmother.

Children could include prayer this week for their grandparents.

The worksheet can be used as an indicator of children's knowledge about the life of Mary. You may like to do the 2 parts of the worksheets on separate

days.

Some ideas to use if children's scores are low –

Review the worksheet and work through the items and discuss them with the class.

Repeat worksheet when the resource is completed as a post test.

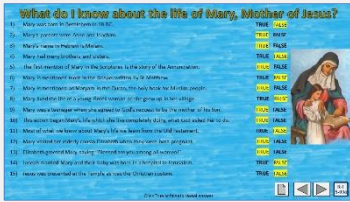
Read Scripture stories about Mary in class prayer to reflect on and discuss.

Set up a research project on Mary and get children to present their findings in different ways to classes.

Invite your priest, parents, staff or parishioners to share what they know about Mary.

Make a 'What we know about Mary' board and ask children, staff, parents and grandparents to contribute to it.

#### Teacher's Notes



**Slide 3b What do I know about the life of Mary, Mother of Jesus?**

Note the woman in the image with Mary as a little girl is her mother St Ann, who was Jesus’ grandmother.

Children could include prayer this week for their grandparents.

The worksheet can be used as an indicator of children’s knowledge about the life of Mary. You may like to do the worksheets on separate days.

Some ideas to use if their scores are low –

Review the worksheet and work through the items and discuss them with the class. Repeat worksheet when the resource is completed as a post-test or use it as an oral quiz.

Children could work in groups and share their knowledge

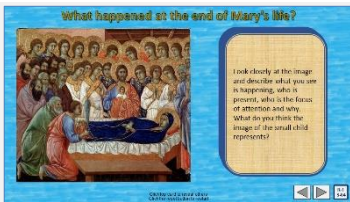
Read Scripture stories about Mary in class prayer to reflect on and discuss.

Set up a research project on Mary and get children to present their findings in different ways to classes.

Use your priest, parents or parishioners to share what they know about Mary.

Make a ‘What we know about Mary’ board and ask children, staff, parents and grandparents to contribute to it. You could use post it notes.

Teacher’s Notes



**Slide 4 What happened at the end of Mary’s life?**

Draw children’s attention to the art work in the slide images in this Assumption resource.

The image on this slide is titled ‘Death of the Virgin’ by an Italian artist, Duccio di Buoninsegna. It is painted in tempura paint on wood and was painted between the years 1308-1311 in Siena. It shows Mary’s dead body

surrounded by angels and saints. Christ can be seen in the centre holding a small image of Mary’s soul. The painting hangs in the Museum of Opera in Siena.

Use the Flip cards to initiate conversations and questions about Mary’s Assumption. Respond to the questions on the flip cards.

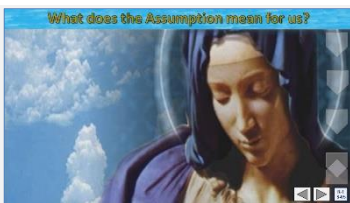
Invite each child to say what they have learned so far about Mary’s Assumption.

Note that many of the images of the Assumption were painted by artists from earlier centuries and they are what are called ‘traditional’ images of Mary.

Their value is that they give an image for us to think about as we try to understand the event they depict.

It is good for the children to note different artistic styles and eras of art and children will enjoy deciding on their favourite styles and explaining the reasons for their choice. Encourage children to research why Mary is often painted wearing blue or red.

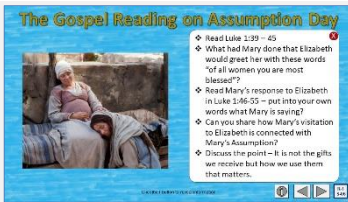
Teacher’s Notes



**Slide 5 What does the Assumption mean for us?**

Use the blind to reveal the text and respond to the text prompts to talk about what Mary’s Assumption means for us.

Teacher’s Notes



### Slide 6 The Gospel Reading on Assumption Day

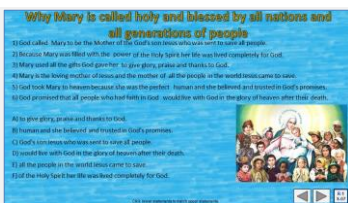
Use this reading in prayer this week to help children become very familiar with it. It is a very important story for all Christians. Can you explain why? Adapt Teaching and Learning Experience 3. Children could make a fridge magnet or a bunting flag of an important verse in this reading.

### ANSWERS

- What has Mary done that Elizabeth would greet her with these words “of all women you are most blessed”? God has chosen Mary to be the mother of Jesus the saviour of the world and she trusted completely in what God promised and by her Assumption she is the fulfilment of God’s promise of eternal life in heaven. What God did for Mary, God will do for us.
- **Read Mary’s response to Elizabeth in Luke 1:46-55** – how would you describe what Mary says? Mary’s response shows her gratitude and her humility and is full of praise to God for God’s power and justice.
- **Can you share how Mary’s visitation to Elizabeth is connected to Mary’s Assumption?** Elizabeth’s words remind us of the unique woman Mary is and by accepting God’s request to be the mother of his son, Jesus she made it possible for God’s plan for the world to be achieved. See also 1st item above.
- **Discuss the point – Our greatness depends not on the gifts we receive but on how we use them.** Everything we have and are comes to us from God. Our talents, our personal qualities and everything good in our lives are God’s gift and grace to us. God has given us these gifts to use for the benefit not just of ourselves but for others also. To whom much is given, much is expected. Mary’s greatness came because she chose to use the gifts and opportunities God gave her for the benefit of others. Mary was full of grace tapu and mana and she used these not to boost her own importance but to proclaim God’s greatness in her prayer we call the Magnificat (Luke 1:46- 55).

Adapt Teaching and Learning Experience 4

### Teacher’s Notes



### Slide 7 Why Mary is called holy and blessed by all nations and all generations of people

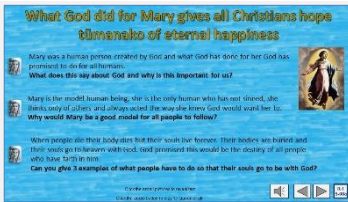
Children read and suggest which statement is the correct match and check it with the floaters.

ANSWERS 1) C, 2) F, 3) A, 4) E, 5) B, 6) D

Look at the image on this slide - children could create art works or photo collages (using images of children of different cultures from your school) surrounding Mary Queen of Heaven and Earth and all People. These could be shared in an Assumption Exhibition in the school or church to celebrate Mary’s special feast.

Invite children to tell a partner why Mary is called holy and blessed by all nations and generations. Explain that Mary is also honoured by Muslim people as well as Christians as a holy and blessed woman.

### Teacher’s Notes



### Slide 8a What God did for Mary gives all Christians hope tūmanako of eternal happiness

#### Suggested responses

- 1) God is generous and rewards people's goodness and God keeps his promises.
- 2) Mary is a good model for all people because she was faithful to God everyday of her life and was free from sin. She was a loving person who cared for all people.
- 3) People need to avoid sin and selfishness, love, care for and serve others, share their gifts for the common good of all.

Teacher's Notes



### Slide 8b What God did for Mary gives all Christians hope tūmanako of eternal happiness

- 4) Eternal life will be endless joy and happiness giving God praise and thanks with all the Saints and angels and people who have led good lives on earth including our family and friends in heaven.

- 5) We can ask Mary to give us hope and that she will care for and protect families, homes, countries and all people who need her care and love.
- 6) Sing using the MP3 'O Queen of All'. This song could be sung during mass on Assumption Day.

Teacher's Notes



### Slide 9 Check Up

This formative assessment strategy will help teachers to identify how well children have achieved the Learning Intentions of the resource. Teachers can choose how they use the slide in their range of assessment options.

A worksheet of this slide is available for children in Years 5-8 to complete.

The last two items are feed forward for the teacher.

Recording the children's responses to these items is recommended as it will enable teachers to adjust their learning strategies for future resources and target the areas that need further attention.

Teacher's Notes



### Slide 10 Time for Reflection

The MP3 is played to help create a reflective atmosphere and bring the children to stillness and silence as the teacher invites them to *reflect on how knowing about Mary's Assumption can give them hope tūmanako that one day after their death they will be raised body and soul to be with God in heaven.*

Teacher's Notes

**What do I know about the life of Mary, Mother of Jesus?**

Name: \_\_\_\_\_ Date: \_\_\_\_\_

Highlight TRUE or FALSE

1. Mary was born in Bethlehem in 18 BC.	TRUE FALSE
2. Mary's parents were Anna and Joachim.	TRUE FALSE
3. Mary's name is Yehanna in Hebrew.	TRUE FALSE
4. Mary had many brothers and sisters.	TRUE FALSE
5. The first mention of Mary in the Scriptures is the story of the Annunciation.	TRUE FALSE
6. Mary is mentioned most in the Gospel written by St. Matthew.	TRUE FALSE
7. Mary is mentioned as Maryam in the Quran, the Holy Book for Muslim people.	TRUE FALSE
8. Mary lived the life of a young Greek woman as she grew up in her village.	TRUE FALSE
9. Mary was a teenager when she agreed to God's request to be the mother of his son.	TRUE FALSE
10. This action began Mary's life when she has completely done what God called her to do.	TRUE FALSE
11. Most of what we know about Mary's life we learn from the Old Testament.	TRUE FALSE
12. Elizabeth greeted Mary saying "Blessed are you among all women!"	TRUE FALSE
13. Elizabeth greeted Mary saying "Blessed are you among all women?"	TRUE FALSE
14. Joseph married Mary and their baby was born in a hospital in Jerusalem.	TRUE FALSE
15. Jesus was presented at the temple as was the Christian custom.	TRUE FALSE

**Worksheet** Click the up arrow icon to go to the previous slide.

**Slide 3a What do I know about the life of Mary, Mother of Jesus? WORKSHEET**  
 This worksheet relates to slide 3a

Teacher's Notes

**What do I know about the life of Mary, Mother of Jesus?**

Name: \_\_\_\_\_ Date: \_\_\_\_\_

Highlight TRUE or FALSE

16. Jesus was educated at the temple school and Jesus taught his gardening skills.	TRUE FALSE
17. Jesus was lost in Peru for weeks and Mary and Joseph found him playing with his friends.	TRUE FALSE
18. When Jesus began teaching with Mary, he opened his eyes and became one of the disciples.	TRUE FALSE
19. Christ at a wedding Mary asked Jesus to turn the water into wine to stop people drinking.	TRUE FALSE
20. Jesus went about curing people and Mary could see he truly was God's Son.	TRUE FALSE
21. Mary was seen weeping things for Jesus because she didn't see and she worried about him.	TRUE FALSE
22. Mary was present when Jesus had his last supper the night before he died.	TRUE FALSE
23. As Jesus carried his cross up Calvary St. Mary didn't see him because there was such a crowd.	TRUE FALSE
24. Mary stayed with Jesus by the cross and Jesus asked his loved ones to look after her.	TRUE FALSE
25. Mary stayed with Jesus by the cross and Jesus asked his loved ones to look after her.	TRUE FALSE
26. When the Holy Spirit came Mary was present in the upper room in Jerusalem.	TRUE FALSE
27. Mary died with the apostles when they said that God took her body and soul to Heaven.	TRUE FALSE
28. The Assumption is the feast that celebrates Mary becoming the mother of Jesus.	TRUE FALSE
29. The Church celebrates Mary's Assumption by gathering for Eucharist in parish churches.	TRUE FALSE
30. Mary's feast is happy and has been moved to a feast of joy.	TRUE FALSE

**Worksheet** Click the up arrow icon to go to the previous slide.

**Slide 3b What do I know about the life of Mary, Mother of Jesus? WORKSHEET**  
 This worksheet relates to slide 3b

Teacher's Notes

**Check up**

Name: \_\_\_\_\_ Date: \_\_\_\_\_

1) Name 3 things the Assumption means for us (25/16/17)	2) Explain what happened when Mary died. (25/16/17)
3) In the Gospel that is read on Assumption Day Elizabeth recognizes something about Mary and Mary responds – write about this in your own words. (25/16/17)	4) Why does the Feast of the Assumption give Christians hope of eternal life? (25/16/17)
5) Which activity do you think helped you to learn best in this resource?	6) Questions I would like to ask about the topic in this resource are ...

**Worksheet** Click the up arrow icon to go to the previous slide.

**Slide 9 Check up WORKSHEET**  
 This worksheet relates to slide 9

Teacher's Notes