

## SLIDE OVERVIEW – TE TAU ME ONA RITENGA TAPU

### ORDINARY TIME

#### Year 7 Resource 1

Print off this slide overview to supplement your planning.

Refer to Teacher's Notes for background information related to the resource content and suggested Teaching and Learning Experiences in the Teacher's book or in the Teacher's material under Resource Notes on the Resource Home Page.

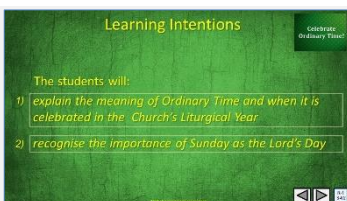
If worksheets are used in this resource these can be printed from PDF files that are available on-line in (lesson) Resource Documents.



Teacher's Notes

#### Slide 1 Celebrating Sundays in Ordinary Time

Use this slide as a focussing strategy to introduce the resource topic. Read the title together and invite students to share something they know about Ordinary Time – how during this time, we use it to grow closer to Jesus and how we celebrate Sundays in this season.



Teacher's Notes

#### Slide 2 Learning Intentions

Read through the Learning Intentions with the class and identify some ideas/questions that might be explored in the resource.



#### Slide 3 What I know about the Liturgical Year

Print off copies of the worksheet for the students to complete and add to after they have viewed the clip.

Follow the directions on the slide. Note Mardi Gras is not usually celebrated in New Zealand but is a big celebration in Central and South America and Mexico. Celebrations can start from early January and culminate on Shrove

Tuesday - Mardi Gras - the day before Ash Wednesday. The time between these days is known as carnival season.

Watch the clip

<https://www.youtube.com/watch?v=SvVnqDsv07c> Liturgical Calendar Saints and Seasons 2:57 minutes

Teacher's Notes



Students suggest a statement that completes correctly each sentence.  
Check answers with the floater.

Students share 2 new things they learned about the importance of Sunday as it should be celebrated and why.

## Slide 5 Ordinary Time in a nutshell

Make up a quick fire quiz to share.

Share what you have learned about Ordinary Time in a nutshell with a younger child. Discuss your responses to the questions on the Post it notes.

**Slide 6 Ordinary Time is a time to grow closer to Jesus and his friends**

Students read a flip card and either make up a question or explain the text in their own words. Notice what is happening to the image and read the text on it. What can you do to grow closer to Jesus in Ordinary Time?

## Slide 7 Major Feasts which occur in Ordinary Time

Start with the Feast of the Holy Trinity (the Shamrock) and work clockwise around the circle.

Name the feasts you have celebrated already this year.

Give reasons for your response. Say something you know or want to know about each feast.

## Slide 8 Using the Columban Calendar

Show the class your Columban Calendar.

Work through each item on the slide.

There are approximately 24 more Sundays in Ordinary Time.

Ordinary Time resumes on the Sunday after Pentecost.

Friday is traditionally a day of Penance which means a day of fasting.

Research why the titles and dates of some feasts are red.



What I know about the Liturgical Year

Name: \_\_\_\_\_ Date: \_\_\_\_\_

1	2	3
4	What I know about the Liturgical Year	5
6	7	8

© 2014 by the Catholic Education Resource Project

Worksheet

### Slide 3 What I know about the Liturgical Year WORKSHEET

This worksheet relates to slide 3

Teacher's Notes

Check up

Name: \_\_\_\_\_ Date: \_\_\_\_\_

Calculate the Liturgical Year

What is the Liturgical Year? It is the cycle of the seasons of the Church's year. It begins with Advent and ends with Pentecost. It is a cycle of 33 weeks. The Liturgical Year is divided into three parts: Advent, Christmas, and Lent. Each part has its own special prayers and rituals. The Liturgical Year is a cycle of the seasons of the Church's year. It begins with Advent and ends with Pentecost. It is a cycle of 33 weeks. The Liturgical Year is divided into three parts: Advent, Christmas, and Lent. Each part has its own special prayers and rituals. The Liturgical Year is a cycle of the seasons of the Church's year. It begins with Advent and ends with Pentecost. It is a cycle of 33 weeks. The Liturgical Year is divided into three parts: Advent, Christmas, and Lent. Each part has its own special prayers and rituals.

Worksheet

### Slide 10 Check Up WORKSHEET

This worksheet relates to slide 10

Teacher's Notes